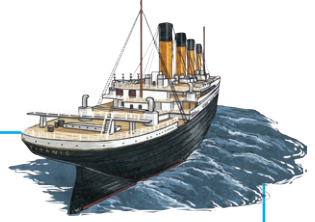


# The Titanic

Titanic was a very big ship. It carried over 2000 people. Its first journey was from Southampton to New York but the ship never got to America.



## What Could You Do on Titanic?

There were lots of things to do on Titanic if you were rich!

**restaurants**

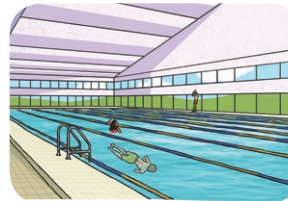


**a pool**



**libraries**

**lifts**

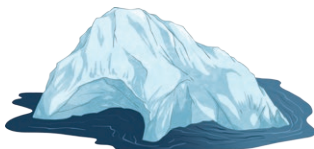


**a gym**

## What Happened to Titanic?

Sadly, Titanic hit an iceberg and sank. Many people died.

### Did You Know...?



1. Titanic was 269 metres long (the same length as three football pitches or 24 buses!).
2. The iceberg that hit Titanic was 30 metres tall.

# Questions

1. How many people did Titanic carry? Tick one.

- ☐ over 1000
- ☐ over 2000
- ☐ over 3000

2. Where was Titanic going to? Tick one.

- ☐ New York
- ☐ Southampton
- ☐ Belfast

3. Tick one word to complete the sentence.

There were lots of things to do on Titanic if you were \_\_\_\_\_.

- ☐ poor
- ☐ sad
- ☐ rich

4. What did Titanic hit? Tick one.

- ☐ an iceberg
- ☐ a hill
- ☐ a wave

5. Which of these was not on Titanic? Tick one.

- ☐ a pool
- ☐ a cinema
- ☐ a gym

# Answers

1. How many people did Titanic carry? Tick one.

- ☐ over 1000
- ☒ over 2000
- ☐ over 3000

2. Where was Titanic going to? Tick one.

- ☒ New York
- ☐ Southampton
- ☐ Belfast

Tick one word to complete the sentence.

There were lots of things to do on Titanic if you were \_\_\_\_\_.

- ☐ poor
- ☐ sad
- ☒ rich

3. What did Titanic hit? Tick one.

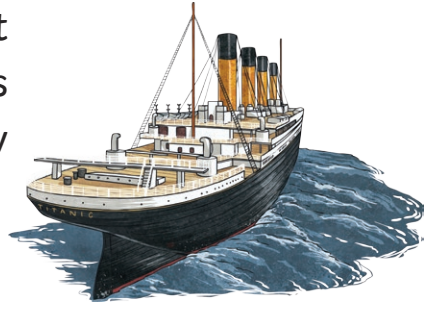
- ☒ an iceberg
- ☐ a hill
- ☐ a wave

4. Which of these was not on Titanic? Tick one.

- ☐ a pool
- ☒ a cinema
- ☐ a gym

# The Titanic

Titanic was the biggest ship of its time. It carried over 2000 passengers and crew. Its first journey was from Southampton to New York but the ship never got to America.



## How Was Titanic Made?

Titanic was built in Belfast. It took three years to build and cost millions of dollars.

Titanic had four funnels. Only three of these funnels worked, the other was to make the ship look more important.

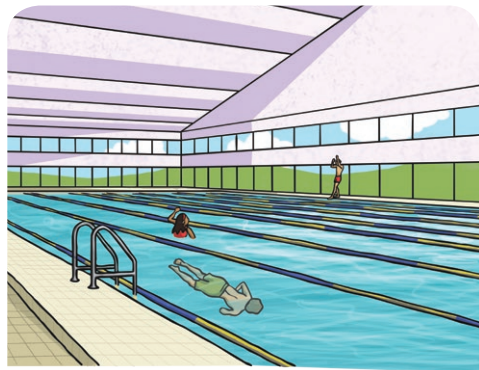


## What Could You Do on Titanic?

There were lots of things to do on Titanic! If you were a rich passenger you had a private bathroom, sitting room and bedroom. You could go to restaurants or swim in the pool. If you were a poor passenger you slept on bunk beds in crowded cabins. There were less fun things you could do.

On Titanic, there were:

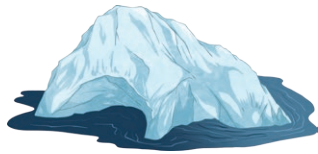
- four restaurants,
- one pool,
- two libraries,
- one gym.





## Why Didn't Titanic Reach America?

Sadly, on 15<sup>th</sup> April 1912, Titanic hit an iceberg and sank. Many people lost their lives.



### Did You Know...?

1. Titanic was 269 metres long (the same length as three football pitches).
2. The iceberg that hit Titanic was around 30 metres tall.



# Questions

1. How many people did Titanic carry? Tick one.

- ☐ over 1000  
☐ over 2000  
☐ over 3000

2. Draw lines to match these sentences.

Poor passengers

Rich passengers

All the passengers

were travelling to  
New York.

had less fun  
things to do.

had lots of fun  
things to do.

3. Number the events below to show the order they happened.

- ☐ Titanic left Southampton on its first journey.  
☐ Titanic hit an iceberg.  
☐ Titanic was built in Belfast.

4. Fill in the missing word.

Titanic was the \_\_\_\_\_ ship of its time.

5. Find and copy one word that shows Titanic sinking was an unhappy event.

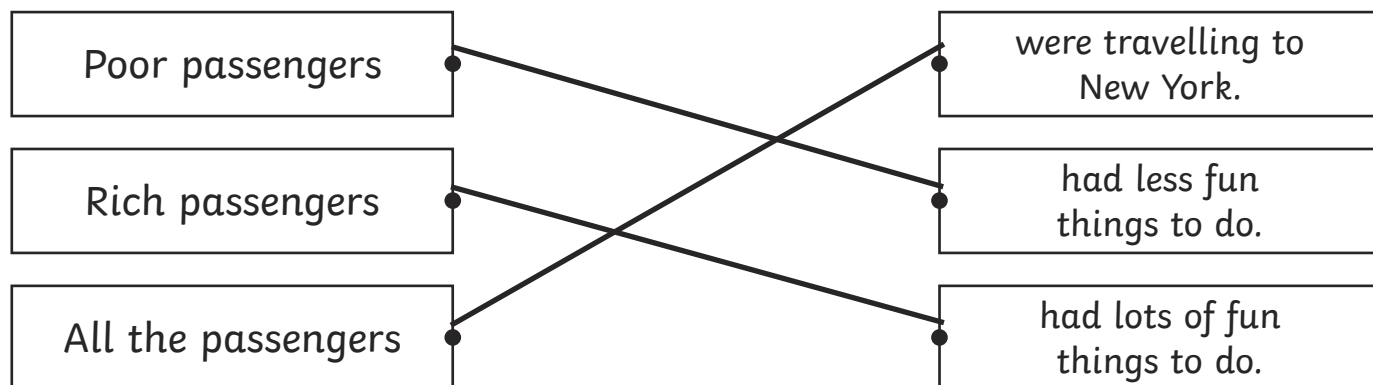
---

# Answers

1. How many people did Titanic carry? Tick one.

- ☐ over 1000  
☒ over 2000  
☐ over 3000

2. Draw lines to match these sentences.



3. Number the events below to show the order they happened.

- ☐ 2 Titanic left Southampton on its first journey.  
☐ 3 Titanic hit an iceberg.  
☐ 1 Titanic was built in Belfast.

4. Fill in the missing word.

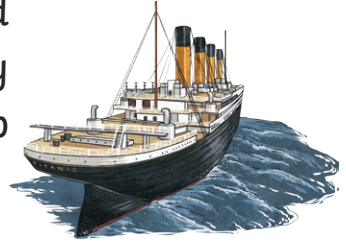
Titanic was the **biggest** ship of its time.

5. Find and copy one word that shows Titanic sinking was an unhappy event.

**sadly**

# The Titanic

Titanic was the biggest ship of its time. It carried over 2000 passengers and crew. Its first journey was from Southampton to New York but the ship never got to America.



## How Was Titanic Made?

Titanic was built in Belfast. It took three years to build and cost millions of dollars.

Titanic had four funnels. Only three of these funnels worked, the other was to make the ship look more powerful and important.

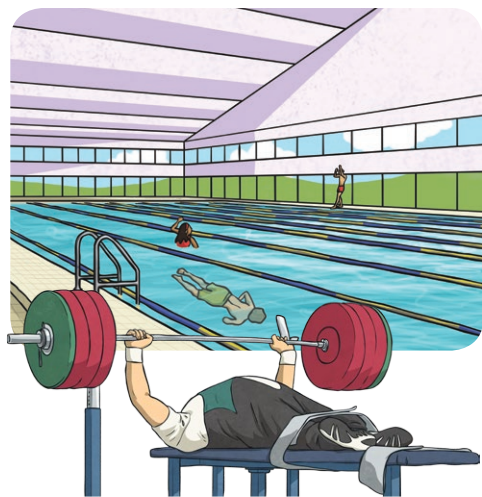
## What Could You Do on Titanic?

There were lots of things to do on Titanic! If you were a rich passenger you travelled in first class. First class passengers had a private bathroom, sitting room and bedroom. You could go to restaurants, enjoy music and dancing or swim in the pool.

If you were a poor passenger you travelled in third class. Third class passengers slept on bunk beds in crowded cabins. There

### On Titanic, there were:

- 4 restaurants;
- 1 pool;
- 2 barber shops;
- 2 libraries,
- 1 gym;
- 1 squash court;
- lifts to move between floors.



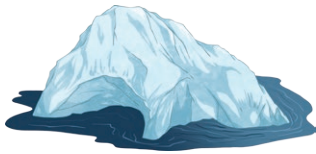


were only two bathrooms for all the third class passengers on board! There were less fun things to do.

### Why Didn't Titanic Reach America?

Sadly, on 15<sup>th</sup> April 1912, Titanic hit an iceberg and sank. Many people lost their lives.

There are lots of different ideas about who was to blame. Some people say the ship's captain ignored warnings about icebergs. If he had slowed down, the disaster might never have happened. Other people say the screws holding the ship together were made from poor quality iron, so the ship broke easily when the iceberg hit.



#### Did You Know...?

1. Titanic was 882 feet (269 metres) long.
2. The iceberg that hit Titanic was around 100 feet (30 metres) tall.



# Questions

1. How many people did Titanic carry? Tick one.

- ☐ over 1000
- ☐ over 2000
- ☐ over 3000

2. Number the events below to show the order they happened.

- ☐ Titanic left Southampton on its first journey.
- ☐ Titanic hit an iceberg.
- ☐ Titanic was built in Belfast.

3. Fill in the missing word.

There were lots of things to do on Titanic if you were \_\_\_\_\_.

4. How many bathrooms did the third class passengers share?

---

5. Find and copy one adverb that shows Titanic sinking was an unhappy event.

---

6. Why do you think the Titanic hit an iceberg and sank? Give a reason for your answer.

---

---

# Answers

1. How many people did Titanic carry? Tick one.

- ☐ over 1000  
☒ over 2000  
☐ over 3000

2. Number the events below to show the order they happened.

- Titanic left Southampton on its first journey.  
 Titanic hit an iceberg.  
 Titanic was built in Belfast.

3. Fill in the missing word.

There were lots of things to do on Titanic if you were **rich**.

4. How many bathrooms did the third class passengers share?

**two**

5. Find and copy one adverb that shows Titanic sinking was an unhappy event.

**sadly**

6. Why do you think the Titanic hit an iceberg and sank? Give a reason for your answer.

**Accept any answer that chooses from one of the two theories in the text (either 'I think the Titanic hit an iceberg and sank because the ship's captain ignored warnings about icebergs.' Or, 'I think the Titanic hit an iceberg and sank because the screws holding the ship together were made from poor quality iron.') and provides a plausible reason for the answer chosen, e.g. 'Because the captain is in charge of making sure the ship doesn't sink.'**