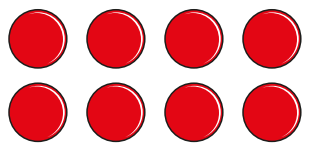
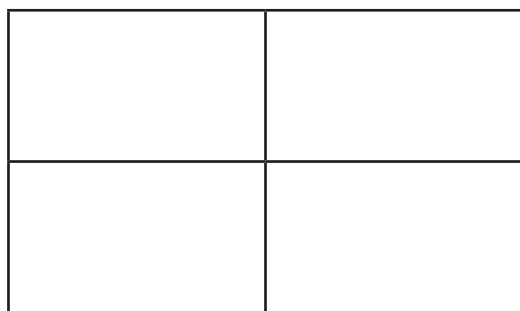


Find a quarter

1 Here are 8 counters.



a) Share the counters equally into 4 groups.



b) Complete the sentences.

counters are shared equally

between

groups.

There are

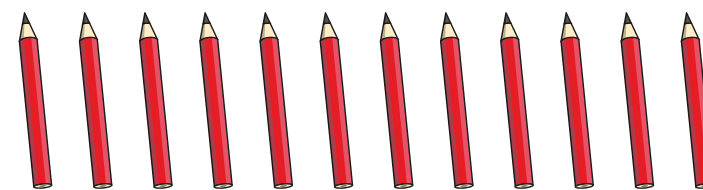
counters in each group.

c) What is $\frac{1}{4}$ of 8?

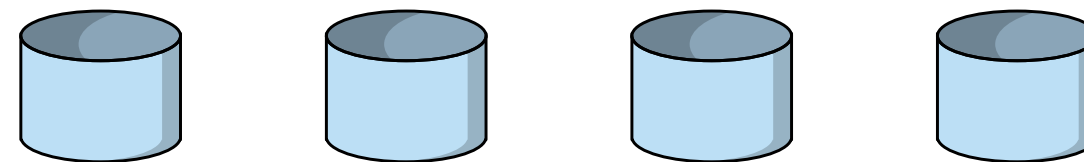
How did you work this out?



2 There are 12 pencils.

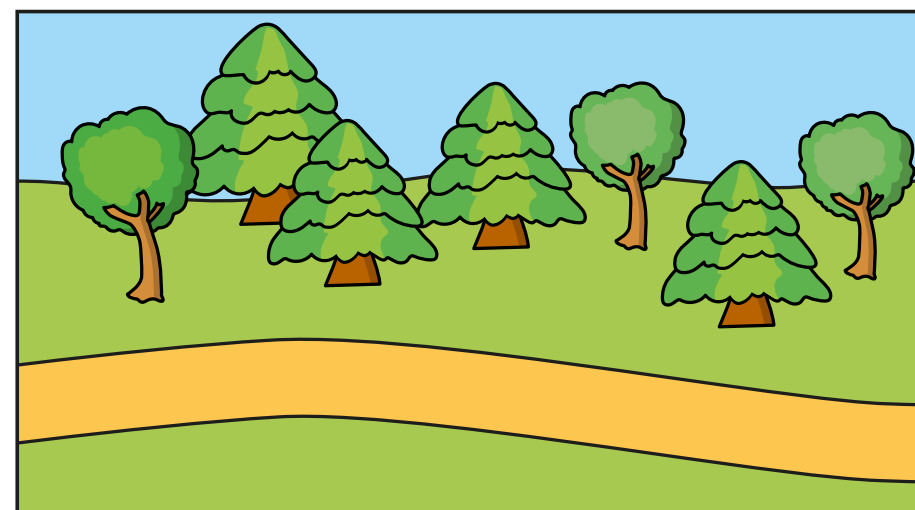


a) Share them equally between 4 pencil pots.



b) What is $\frac{1}{4}$ of 12?

3 Tom and Dora are walking along a path.
By midday Dora has walked halfway.
Tom has walked a quarter of the way.

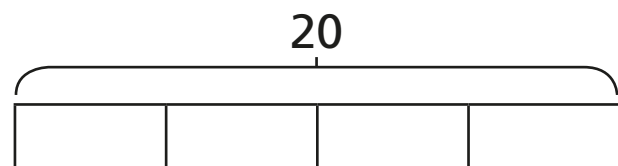


a) Draw an arrow to show where Dora is.
b) Draw an arrow to show where Tom is.



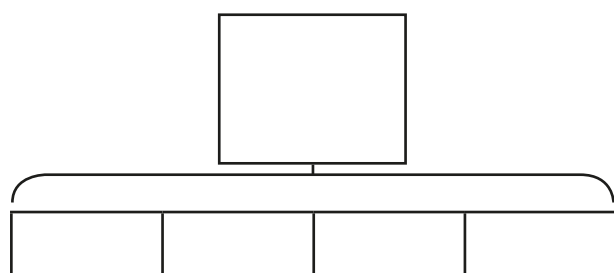
- 4 Use the bar models to help you work out a quarter.

a) Work out $\frac{1}{4}$ of 20



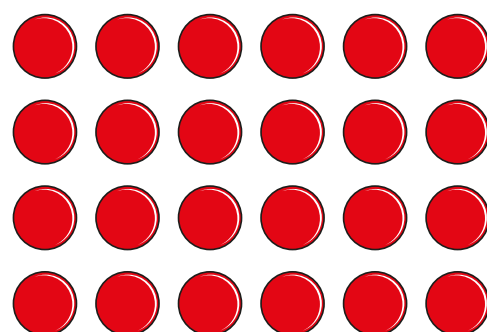
$$\frac{1}{4} \text{ of } 20 = \square$$

b) Work out $\frac{1}{4}$ of 16

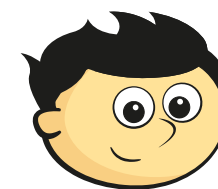


$$\frac{1}{4} \text{ of } 16 = \square$$

- 5 Show that $\frac{1}{4}$ of 24 is 6

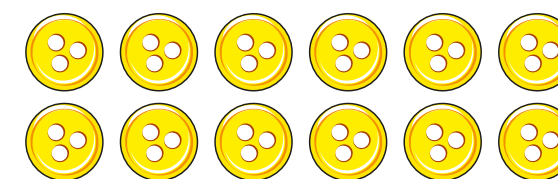


6



I can find a quarter by halving a number and halving again.

Use this method to find $\frac{1}{4}$ of 12



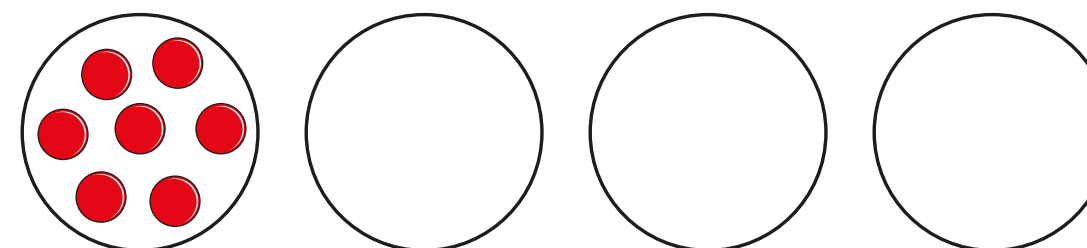
$$\frac{1}{4} \text{ of } 12 = \square$$

- 7 Complete the table.

Number	$\frac{1}{2}$ of Number	$\frac{1}{4}$ of Number
8		
20		
24		

- 8 $\frac{1}{4}$ of a number is 7

What is the number?



The number is